



Customer Supplied Artwork Specifications

Composition

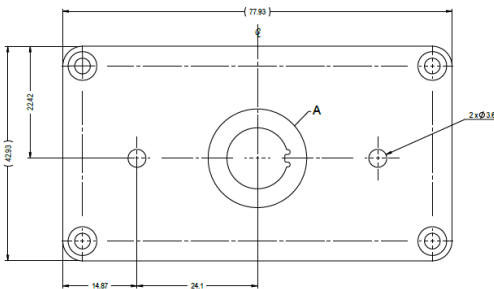
Images & Text should be 1:1 scale and represent an exact overlay on the enclosure or panel being printed on.
It is important that alignment of artwork to all elements has been checked – adjustments or modification of artwork may incur processing fee.

If possible, only printed components should be present in the artwork.

Alternatively, if artwork is layered please provide clear instructions on which layers are present and which are to be omitted.

Example:

Here is an example where the white & red printing must match exactly with features of the machined panel.



In this case the supplied artwork should be 1:1 and placement should match cut out and edge distances exactly as required.

Supply of comparison samples is recommended

Colour

If exact colour matching is required, please provide spec in CMYK format

When colours other than white or black are to be printed on media other than white, layered artwork should be supplied where possible

Supply of comparison samples is recommended

| Image Type | |
|--|---|
| Raster Images | Vector Images |
| Images must be a minimum of 600 dpi** | Vector type images preferred with supplied fonts. |
| Preferred file format is .TIFF | Preferred file format is .ai |
| Other formats such as can be accepted so long as quality is acceptable** | |
| .JEG .PSD .PDF .CDR | .SVG .EPS Vector PDF |

****PLEASE NOTE:**

Any manipulation of your artwork that is required to make it usable may incur an extra cost on top of standard artwork processing fee

If you are unsure as to the suitability of Artwork, please submit your file for analysis or contact us at sales@erntec.com.au